



NWI40-E  
NW210-E  
**LABEL**  
INTENSIVE  
THINKING







ADVANCED DIGITAL TECHNOLOGY FOR NARROW WEB PRINTING





1



2



3



4



5



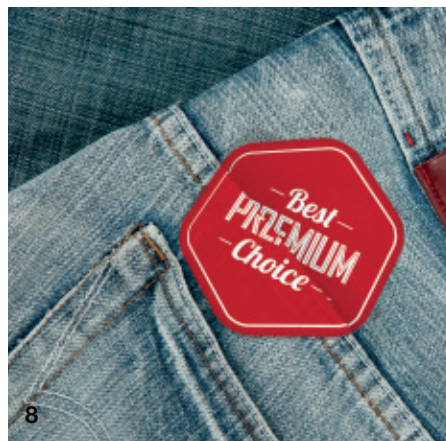
6

IT'S NOT JUST  
A LABEL PRESS,  
BUT A REAL  
BUSINESS TOOL

1-3 Food & Beverage /  
4 Household Care / 5 Personal Care /  
6 Pharmaceutical / 7 Industrial /  
8 Garments / 9 Promotional



7

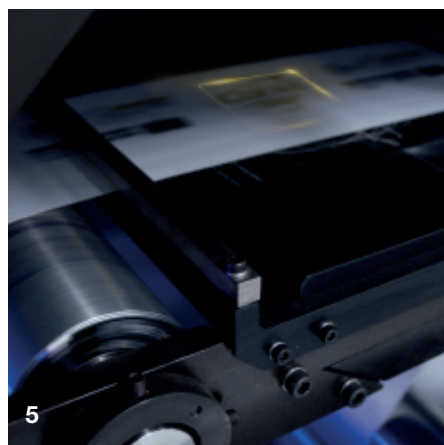
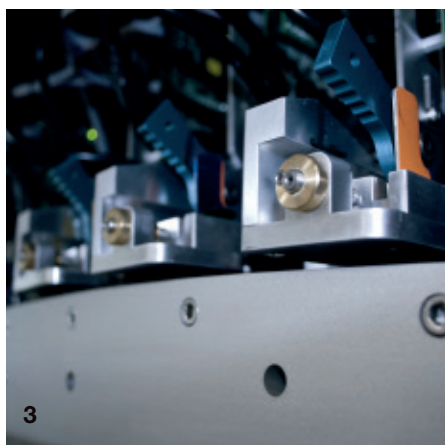
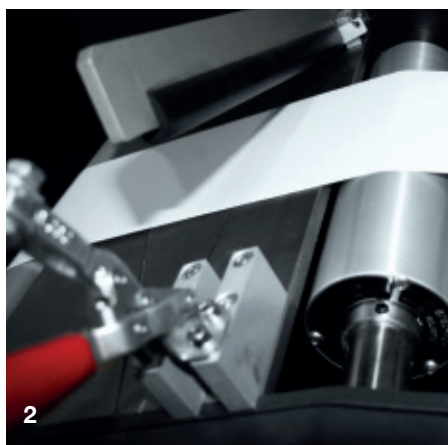


8



9

INX<sup>®</sup>



ADVANCED DIGITAL TECHNOLOGY FOR NARROW WEB PRINTING

# ADAPTABLE FLEXIBLE PROFITABLE EASY-TO-USE VERSATILE

## 1 Control Workstation

A powerful double-screen workstation allows the operator to easily check and manage every part of the system, from file upload and mechanical/laser settings to printheads and hydraulic adjustments.

## 2 Splicing Station

Once the new roll is fixed on the unwinder, it's easy to feed using the web clamp to hook it up to the web. Driving the web and tightening it through the whole path takes just a few minutes.

## 3 Printing Unit

The beating hearts of the INX NW Series of printers are their easily-accessible printing systems, equipped with up to six stations (CMYK, White and optional Varnish) and the new Xaar® 1002 industrial inkjet printheads, featuring a smallest drop size of 6 picoliters.

## 4 Web Cleaning Unit

The web cleaning unit utilizes two groups of cleaning rollers, combined with rubber rollers, to remove dust and dirt. The two anti-static units clear any remaining static charges.

## 5 Laser Die-Cutting

A fully-integrated end-to-end workflow is guaranteed by the in-line laser cutting unit. It allows the seamless production of any type of labels, from digital design to finished product.

## 6 Heavy-Duty Rewinder

Finished labels, perfectly printed, cured and cut, are instantly rewound on a motorized roll. Through a quick and easy operation, they can be removed, packed and made available for customer delivery and application.

## 7 Film Lamination Unit

A high-speed cold-lamination unit is available for full-coverage film lamination of any labels.

## 8 Corona Station

A corona station is available on the NW Series to improve print quality through pre-treatment of substrates with low surface energy.

## 9 Variable Data

Customers who need numbering, language versioning or fully-customized labels, even starting from a simple PDF or raster file, can count on the powerful variable-data features of NW Series.

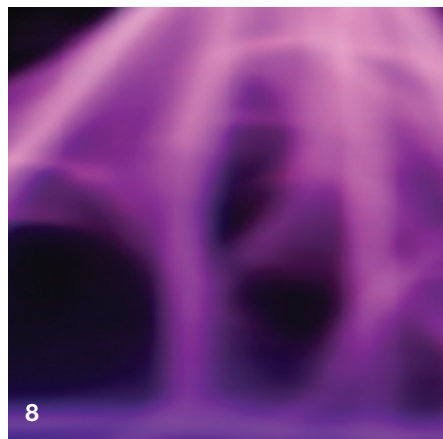
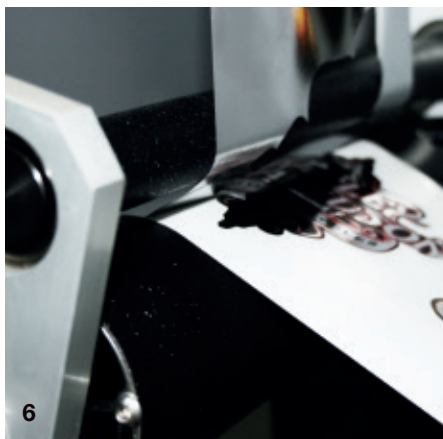
## 10 Roll-to-Sheet Unit

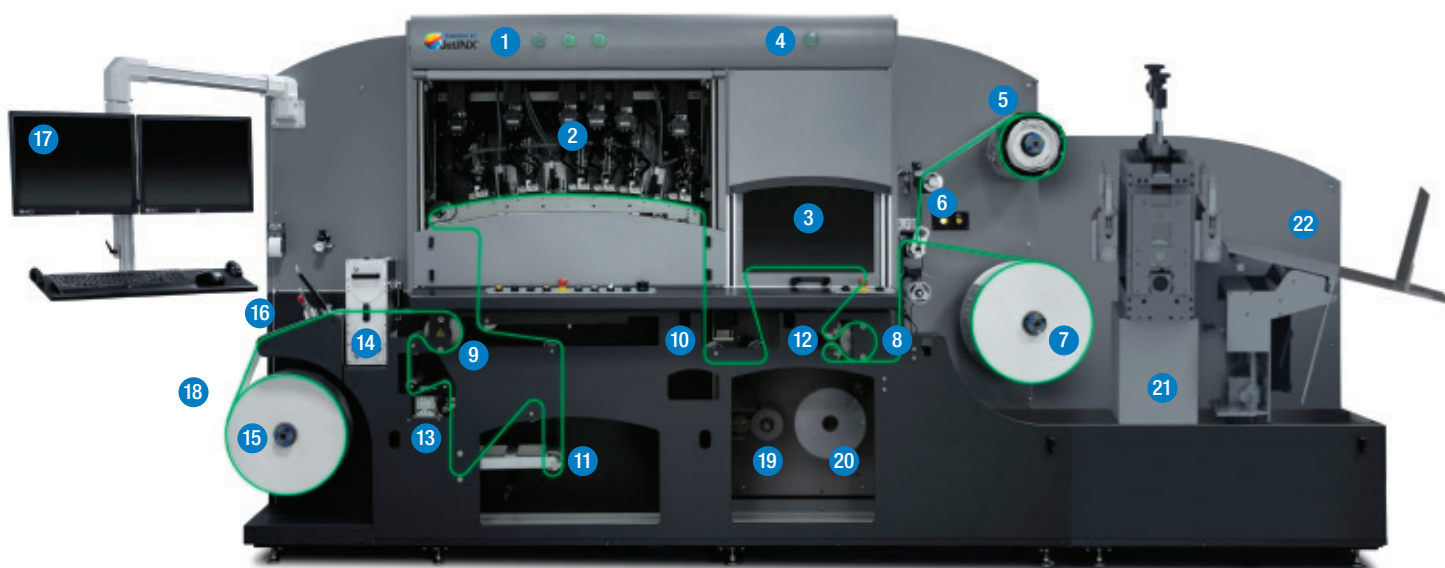
A versatile cross-cutting unit is available for in-line cutting of labels from the printed reel. Easily switch from cut labels to direct-mailing and 1:1 marketing campaigns.

## 11 Semi-Rotary Die-Cutting Unit

*Optional - in place of laser die-cutting*

A physical die-cutting unit is available for those customers who require the highest customization in terms of texts, colors, languages and quantities, but have standard label-sizes or limited die-cut changes over the year.





- |                                |                           |                                  |                          |
|--------------------------------|---------------------------|----------------------------------|--------------------------|
| 1 Light tower, printer station | 7 Product rewind          | 13 Web steering                  | 19 Laminator*            |
| 2 JetINX printing system       | 8 Back scoring unit       | 14 Web cleaning system           | 20 Laminate roll*        |
| 3 Laser cutting system         | 9 Servo drive             | 15 Unwinder                      | 21 Sheeter*              |
| 4 Light tower, laser station   | 10 Final UV-LED cure lamp | 16 Splicing table                | 22 Sheet stacking table* |
| 5 Scrap rewind                 | 11 Dancer arm             | 17 Main operator interface       |                          |
| 6 Waste weed roller            | 12 Servo drive            | 18 Corona treatment* (not shown) | *Optional                |





# NW140-E NW210-E SPECIFICATIONS



## PRINTHEAD TECHNOLOGY

Xaar® 1002 Printheads with an effective resolution of greater than 1000 dpi with 7 drop sizes from 6-42 picoliters  
Xaar® TF Technology™ for improved printer reliability

## CONFIGURATIONS

CMYK + White / Laser  
CMYK + White / No laser  
CMYK / Laser  
CMYK / No laser  
Varnish (Optional)

## RESOLUTION

Printing resolutions:  
360 x 360 dpi  
720 x 360 dpi

## PRINT SPEED

Up to 80 linear feet per minute (23 meters per minute)

## MEDIA HANDLING NW140-E

Print width:  
up to 5.50" (140 mm)

Maximum Media  
Width: 8.00" (203 mm)  
Weight: 150 lbs (70kg)  
Diameter: 24" (610 mm) on 3" (76 mm) core

## MEDIA HANDLING NW210-E

Print width:  
up to 8.25" (210 mm)

Maximum Media  
Width: 8.75" (222 mm)  
Weight: 150 lbs (70kg)  
Diameter: 24" (610 mm) on 3" (76 mm) core

## UV CURING SYSTEM

Low Heat UV-LED Pinning and Curing Systems

## INKS

Environmentally-friendly UV curable inks specially formulated for high-speed single pass web printing on a variety of media types

## LASER DIE CUTTING NW140-E

Spartanics X140 100W Laser Cutting Station

Cutting Area  
Length: Infinite  
Height: 7.87" (200 mm)

## LASER DIE CUTTING NW210-E

Spartanics X210 200W Laser Cutting Station

Cutting Area  
Length: Infinite  
Height: 8.25" (210 mm)

## ELECTRICAL

Printer:  
208-240 VAC 60 Amps  
3 Phase 50/60Hz

Chiller: (NW210-E only)  
208-240 VAC 40 Amps  
3 Phase 50/60Hz

## OPERATING CONDITIONS

65-85 degrees F (18-30 C)  
20% to 80% relative humidity

## PHYSICAL DIMENSIONS

Printer:  
Approx 175"W x 56"D x 83"H, 3500 lbs.  
(Including Spartanics Laser Cutting Station)  
Chiller: 37"W x 44"H

## MEDIA

Paper, polyester, biaxially oriented polypropylene (BOPP), polypropylene (PP), metalized media, and thin aluminum (<0.1mm thick)

## IMAGE PROCESSING

Onyx Thrive  
Onyx ProductionHouse

## OPTIONS

Varnish (inkjet) /  
Corona Treatment /  
400 Watt Laser /  
Sheeter /  
Slitter /  
Laminator



Printer output may vary depending on type of print data file, application, media, environmental conditions, print speed, or other variables. Many of these variables can be controlled by the operator to optimize to production and output quality requirements. Only approved consumables purchased from INX International Ink Co. or authorized distributors and designated for use in the NW140-E/NW210-E are warranted for use in the NW140-E/NW210-E UV Digital Narrow Web Press.

©2015. All trademarks are the property of their respective owners. Due to continuing research and product improvements, features or product specifications may change at any time without notice. 73-00112-B, 06-2015.

**INX International Ink Co.**  
150 N. Martingale Rd. Ste. 700  
Schaumburg, IL 60173  
main: +1.630.382.1800  
toll free: 800.233.INKS

[www.inxinternational.com](http://www.inxinternational.com)  
[info@inxintl.com](mailto:info@inxintl.com)

**INX<sup>®</sup>**